

**Minutes of the  
Leisure and Community Scrutiny Panel  
(to be confirmed at the next meeting)**

**Date:** Wednesday, 6 March 2019

**Venue:** Collingwood Room - Civic Offices

**PRESENT:**

**Councillor** Mrs C L A Hockley (Chairman)

**Councillor** Mrs L E Clubley (Vice-Chairman)

**Councillors:** Mrs S M Bayford, S Dugan, J M Englefield, M J Ford, JP and  
Mrs K K Trott

**Also Present:** Miss S M Bell (Executive Member for Leisure and Community)



**1. APOLOGIES FOR ABSENCE**

No apologies were received at this meeting.

**2. MINUTES**

It was AGREED that the Minutes of the Leisure and Community Panel meeting held on the 28 November 2018 be signed and confirmed as a correct record.

**3. CHAIRMAN'S ANNOUNCEMENTS**

There were no Chairman's announcements made at this meeting.

**4. DECLARATIONS OF INTEREST AND DISCLOSURES OF ADVICE OR DIRECTIONS**

There were no declarations of interest received at this meeting.

**5. DEPUTATIONS**

There were no deputations received at this meeting.

**6. HAMPSHIRE CULTURAL TRUST - WESTBURY MANOR MUSEUM**

The Panel received a presentation from representatives from the Hampshire Cultural Trust, Paul Sapwell, Chief Executive and Deborah Neubauer, Head of Community.

The presentation provided an overview of the Hampshire Cultural Trust, then went on to give specific details regarding the performance of the Westbury Manor Museum in Fareham.

The Panel were encouraged by the positive data and outlook for the next three years at the museum, although the uncertainties surrounding funding for the future is still a cause for concern.

Members asked several questions regarding ways in which the Hampshire Cultural Trust are working to increase the footfall into the Westbury Manor Museum, even though there has been a steady increase in visitors to the Museum since its refurbishment in 2017, the targets are not yet being achieved. Marketing options and increasing visitor numbers were discussed in detail with several suggestions from Members being raised, such as; pop up stalls, school newsletters and a loyalty card.

Members raised concerns over occasions when the Museum has not been able to open due to volunteer's availability. Deborah Neubauer addressed the Panel to reassure Members that although this does happen occasionally, there are usually enough volunteers to cover, meaning there is only a delay in opening rather than being closed for a longer period.

RESOLVED that the Leisure and Community Scrutiny Panel considered the contents of the presentations.

## **7. EXECUTIVE BUSINESS**

The Panel considered the Executive items of business which fall under the remit of the Leisure and Community Portfolio, including individual Executive Member decisions, that have taken place since the last meeting of the Scrutiny Panel on the 28 November 2018.

The Panel considered the decisions shown at items 7(1) to 7(4).

RESOLVED that the Leisure and Community Scrutiny Panel considered the items of Executive Business.

### **(1) Ferneham Hall Vision Review**

No comments were received.

### **(2) Hampshire Physical Activity Strategy 2017-21**

No comments were received.

### **(3) Matched Funding: Sarisbury Cricket Club**

No comments were received.

### **(4) Community Fund Application - Seafarers Sailing Club**

The Vice-Chairman, addressed the Panel to comment that she, in her role as Mayors Consort, recently attended a 'Commodore's at Home' event at the Seafarers Sailing Club and can confirm that their new tractor is very much appreciated.

## **8. LEISURE AND COMMUNITY SCRUTINY PANEL PRIORITIES**

The Chairman invited Members to consider the Scrutiny priorities for the Leisure and Community Scrutiny Panel.

*Councillor J M Englefield left the meeting during the discussions on this item.*

*At the invitation of the Chairman, Councillor Miss S Bell took part in the discussions on this item.*

Members discussed the two main priorities; The Ferneham Hall Vision and The Cams Alders Vision. The Head of Leisure and Corporate Services addressed the Panel to confirm that both these pieces of work are still progressing, and agenda items will be brought to the Panel, at the appropriate time, within the next municipal year.

RESOLVED that the Panel considered the Scrutiny Priorities for the Leisure and Community Portfolio.

(The meeting started at 6.00 pm  
and ended at 7.35 pm).



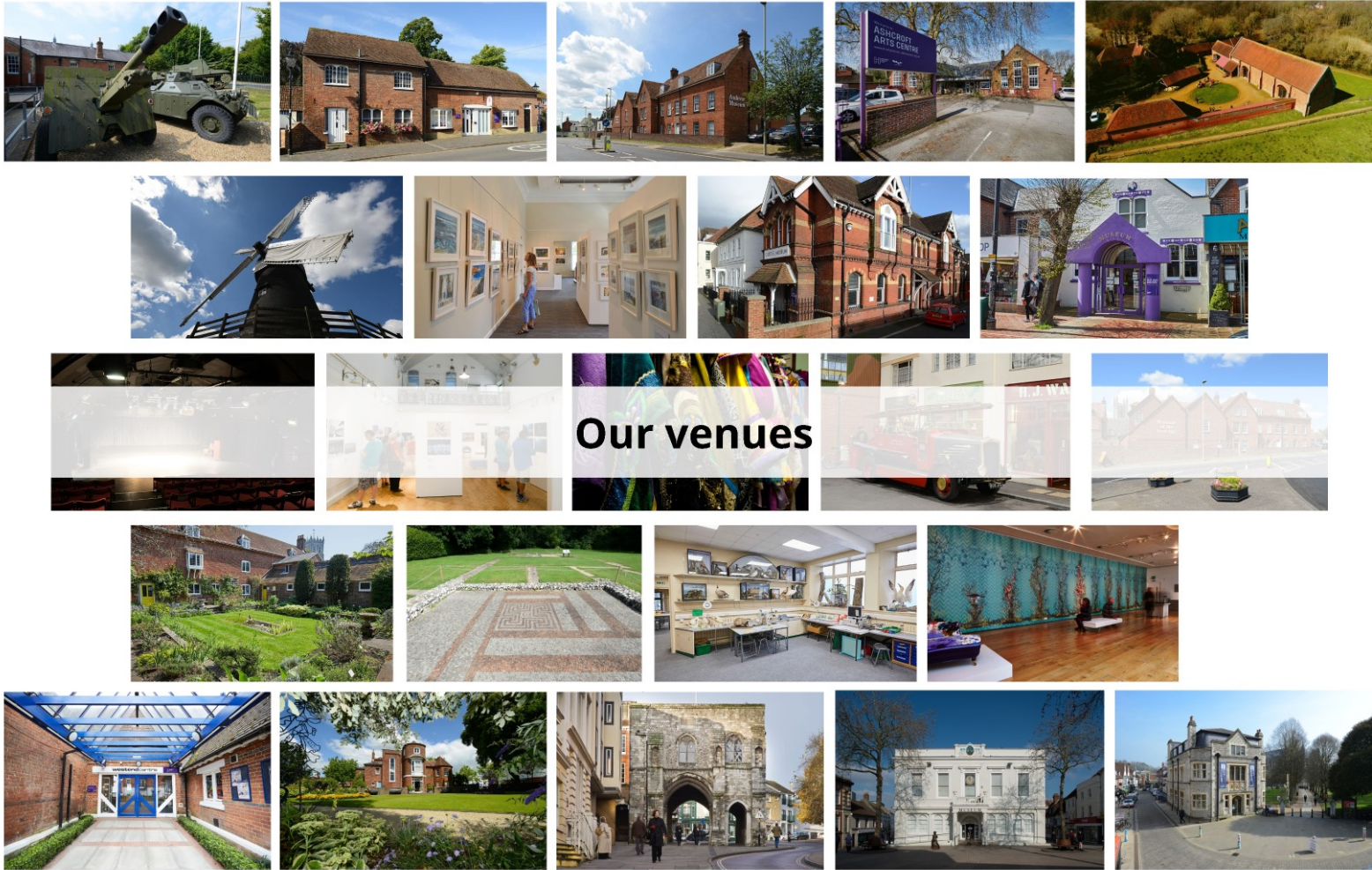


**FBC Leisure and Community Scrutiny Panel  
6 March 2019**



4 years in...





**Our venues**





MuseumSheffield



York Museums Trust





200 temporary exhibitions since 2014

# Investment in venues



**£4,087,079**



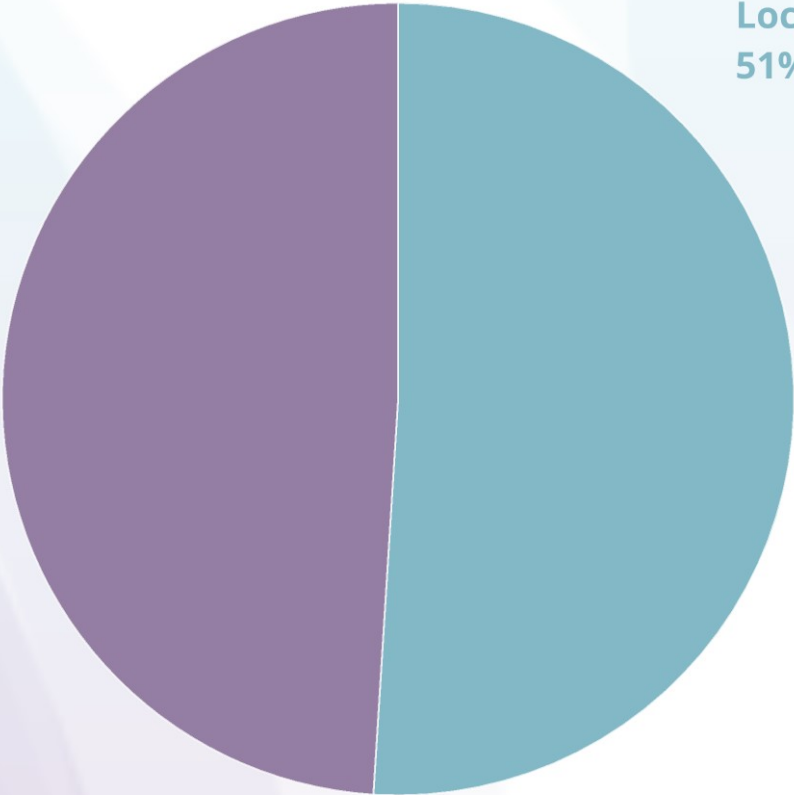
**Fundraised income since 2014**

# Social impact

29,600 participants in 4 years

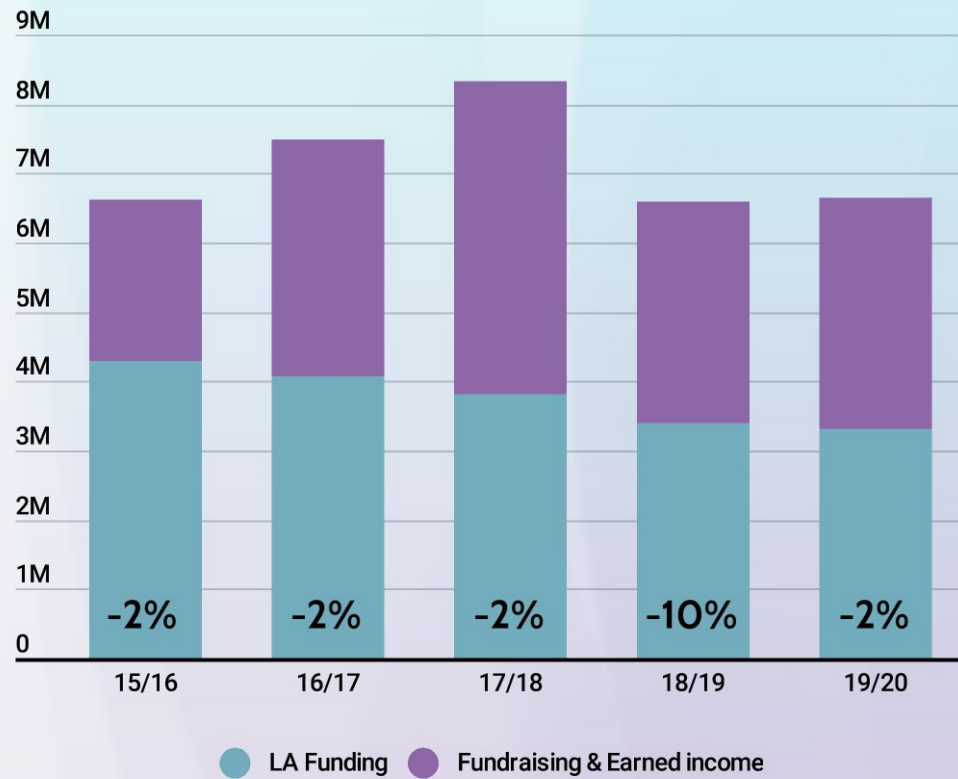


Turnover £6.6m



Local authority income  
51%





**-£700,000**  
**LA funding**

**Turnover fluctuates due to restricted funding for specific one-off projects**

## Earned income

Year on Year comparison	15-16	17-18	+/-
Visitors	466,134	467,182	0%
Admissions	£638,950	£732,605	+ 15 %
Retail income	£213,110	£270,308	+ 27 %
Food & beverage	£332,657	£429,260	+ 29 %
Box office	£241,197	£333,736	+ 38 %
Workshops & schools	£253,720	£309,368	+ 22%
Gift aid	£25,590	£67,397	+ 163%
Venue donations	£25,663	£109,178	+ 325%
Total earned income	£1,730,887	£2,251,852	+ 30%
Per head	£3.71	£4.82	+ £1.11





## Building our charitable identity

Registered charity no. 1158583



A graphic featuring a large, dark blue circle with a white border. Inside the circle, the text "2018 Highlights" is written in a bold, white, sans-serif font. The background of the graphic consists of various shades of blue and purple, with several smaller, semi-transparent circles of different sizes scattered around the main circle.

# 2018 Highlights

## Highlights and performance

- **Re-accreditation – all our museum venues have been officially endorsed as meeting the national standard**
- **Delivered a variety of school programmes to over 16,200 school children (2018-19 YTD)**
- **361,000 visitors figures in managed venues YTD, 2.3% behind budget for 2018-19 following one of the hottest summers on record**
- **Financially on target to hit budget with a small surplus by year end 2018-19**



Supported using public funding by  
**ARTS COUNCIL  
ENGLAND**

# Digital Transformation

- **New websites (six) launched in June 2018**
- **Google Ads grant \$10,000/month**
- **EPOS rolled out to museum venues**
- **Online sales increased from 2% to 40%**





# WESTBURY MANOR MUSEUM

Open today: 10:00am - 5:00pm

Home | Visit | Westbury Manor Museum




Share this page

- OVERVIEW
- YOUR VISIT
- WHAT'S ON
- GALLERY
- TEAM
- SCHOOL VISITS
- CAFÉ AND SHOP

## OUR WORK



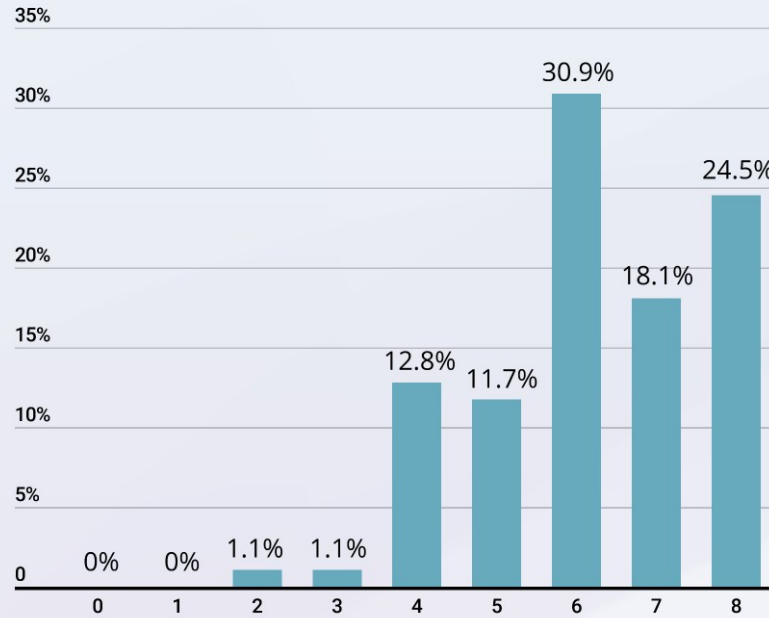
## WHAT'S ON

-  All That Jazz  
19 January - 10 March 2019
-  An Evening With...The Georgia Ramblers Jazz Band  
22 February 2019
-  Chocolate!  
16 March - 04 May 2019

VIEW MORE EVENTS >

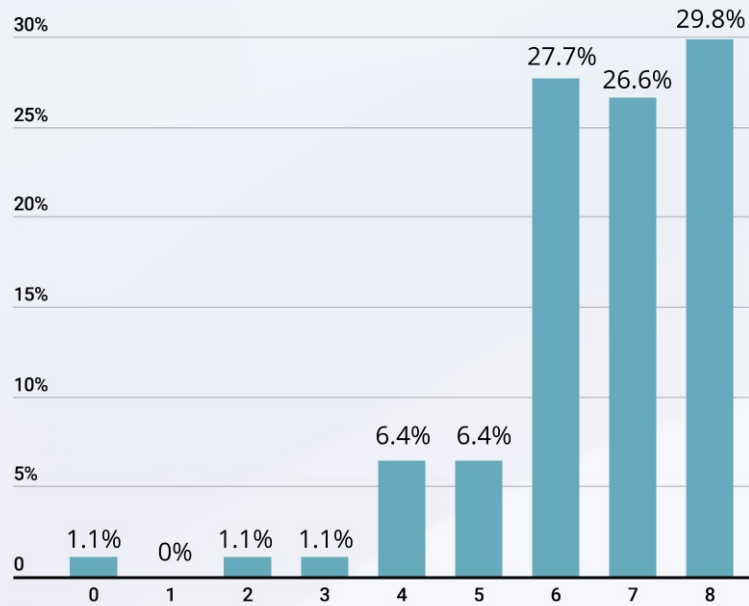


# Staff survey Confidence in HCT



# Staff survey

## Pride in working for HCT





# 2018-19 Exhibition highlights



**ALL THAT JAZZ**  
EXHIBITION: 19 JANUARY – 10 MARCH 2019

Discover the story of jazz and its impact on the local area in this free exhibition at Westbury Manor Museum, and enjoy live music and workshops at Westbury Manor and Ashurst Arts Centre.

**LIVE MUSIC AND FAMILY WORKSHOPS AT WESTBURY MANOR**

Chris Walker and his Quartet	Art Disco Workshop
25 January	20 February
Family Fun @ Westbury	The George Ramblers Jazz Band
18 February	22 February

**JAZZ AT ADHOCROFT ARTS CENTRE, OSBORN ROAD**

Brass Workshops	Flour de Paris	Oliver Wilson Quartet
7 February	8 March	24 March
Jazz Dance Workshop	PS Puckett Orchestra	Southampton Trio
8 March	14 March	6 April

Prices and booking details available online, visit [www.hampshireculture.org.uk](http://www.hampshireculture.org.uk) to find out more and to book.

Westbury Manor Museum: 84 West Street, Fareham PO16 8JJ  
 Ashurst Arts Centre: 100 Ashurst Road, Fareham PO16 8JJ  
 Hampshire Culture Ltd



24 NOV 2018 – 12 JAN 2019

**PUTTING ON A SHOW**

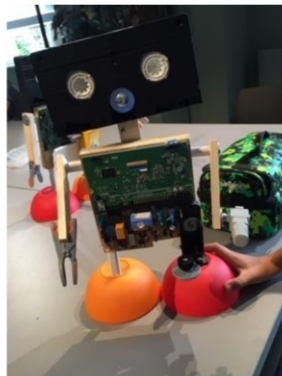
WESTBURY MANOR  
MUSEUM · CAFE · SHOP

Experience the magic of theatre from curtain-up to curtain-call in this free, family-friendly exhibition with puzzles to solve and things to try on, colour in and even smell!

Westbury Manor Museum  
84 West Street | Fareham PO16 8JJ | 01329 822063  
ADMISSION: Free, suggested donation £3.00

HAMPSHIRE CULTURAL TRUST

Hampshire County Council | Winchester City Council | FAREHAM Borough Council



# 2018-19 Event highlights



## WESTBURY MANOR MUSEUM

Special Exhibition for Heritage Open Days

Fareham's Women's Suffrage Centenary Celebration Exhibition

This exhibition explores the background to the movement and the role local Fareham people played in the debates and protests; bringing to life some fascinating characters

6<sup>th</sup> to 15<sup>th</sup> September FREE



Location: 84 West St, Fareham, Hampshire PO16 8JJ  
Opening times: Mon - Sat, 10am - 4pm. Open Sundays in Hampshire school holidays please see our website for details.

01329 822043

Hampshire County Council | Winchester District | FAREHAM Museum & Library

www.hampshireculturaltrust.org.uk/westbury-manor-museum



## WESTBURY MANOR MUSEUM

An Evening With....

The Georgia Ramblers Jazz Band



22<sup>nd</sup> February 7.30pm-9.30pm (doors open 7pm)

Come and enjoy this fantastic local band. No pop, no rock, just swinging jazz, the good old songs of yesteryear from ballads through to hot stomps.

Tickets £10 each. Book online at <https://www.ashcroft.org.uk/event/evening-georgia-ramblers-jazz-band> or call 01329 223100



Location: 84 West St, Fareham, Hampshire PO16 8JJ  
Opening times: Mon-Fri (not Wed) 10am-5pm, Sat 10am-4pm

01329 822043

Hampshire County Council | Winchester District | FAREHAM Museum & Library

www.hampshireculturaltrust.org.uk

FREE ADMISSION

# Café and shop development



## Earned income - Westbury Manor

Year on Year comparison	15-16	16-17	17-18	18-19 YTD (to Jan 19)	LY YTD +/-
Visitors	16,348	13,646	16,388	15,980	+19%
Retail income	£4,550	£3,713	£6,027	£6,453	+24%
Food & beverage	£11,204	£13,255	£26,341	£27,438	+31%
Total earned income	£21,693	£18,786	£36,082	£35,872	+23%
Per head	£1.33	£1.38	£2.20	£2.24	+3%

Museum closed for refurbishment for  
6 months in 2017

## New Community Manager



Emma Banks



# Social Impact

# Social impact



## Local demographic

- Significant increase in 60-74 year olds and 75+ in the next 5 years
- Life expectancy is significantly better than the national average
- Significantly higher proportion of pension age vs working age people in the rest of Hampshire
- More than half of the people 75+ live along increasing risk of social isolation and loneliness
- The area has a significantly higher instance of self-harm / injuries in young people than the national average

# Volunteers

Over 3,700 volunteer hours up to Jan 2019

45 volunteers who perform a range of roles:

- Front of house
- Exhibitions and collections
- Events
- Public engagement





# Older people

## Volunteer programme development

## Partnerships with local agencies / schemes

### Pilot programme:

- Shared reading
- Puzzle club
- Singing for the brain



## WESTBURY MANOR MUSEUM



### Coffee & Puzzle Club



Drop in between 12:30pm and 2pm every second Friday of the month for a coffee and chat in our Library at Westbury Manor.



During these times we will have a selection of our historic jigsaw puzzles available for people to enjoy completing too.



Initial dates: 11<sup>th</sup> Jan, 8<sup>th</sup> Feb and 8<sup>th</sup> March

**Special Puzzle Club offer: buy any hot drink and cake for £4.00!**



HAMPSHIRE CULTURAL TRUST

**Location:** 84 West St, Fareham, Hampshire PO16 0JJ  
**Opening times:** Mon – Sat, 10am – 5pm. Open Sundays in Hampshire school holidays please see our website for details.

☎ 01329 822063

Hampshire County Council Winchester City Council FAREHAM BOROUGH COUNCIL

[www.hampshireculturaltrust.org.uk/westbury-manor-museum](http://www.hampshireculturaltrust.org.uk/westbury-manor-museum) **FREE ADMISSION**

# Young people

**ICE project: CAMHS, Y Services and FASS**

**Horizon 20:20: Putting on a show**

**Mayflower 2020**



**HORIZON**

You are invited to attend a  
Private View of  
**'Putting on a Show'**  
at Westbury Manor Museum  
Friday 23rd November  
1pm—2pm

Please join us for a chance to see the new exhibition and  
celebrate the imaginative artwork created by young people tak-  
ing part in the Horizon 20:20 More and Better project.

With special thanks to: The Bridge Education Centre, Eastleigh,  
The Key Education Centre, Gosport and Woodlands Education  
Centre, Havant.

Address: Westbury Manor Museum, West Street, Fareham PO16 0JJ





Coming up

## 2019-20 Exhibition programme

### Chocolate! – March to May

- Workshops and Talks programme
- Special Chocolate Afternoon Tea
- Chocolate and Coffee promotion in Café

### Rachel Hudson – May to July

- Hands on Garden related activities

### Surviving the Stone Age – July to September



## 2019-20 Events

### Evening opening

- Live music
- Open mic nights

### Outdoor events

- The Tempest

### Supporting local events and initiatives

- Community stall at D Day event
- 999 event
- Fareham bygones event



